



Villages of Tuscany

General information

Name of the village	SCARLINO
Province	Grosseto
Tourist information	<p>IAT OFFICE (INFORMATION AND RECEPTION)</p> <p>The headquarters of the Puntone Via Galleria Commerciale, Marina di Scarlino – In May and June: Saturdays, Sundays and public holidays from 9 a.m. to 1 p.m. From July to September 17 every day from 9 am to 1 pm Telephone: SEDE PUNTONE +39 0566 866288</p> <p>The Scarlino office Via Generale Citerni 2 (c/o Municipal Library Headquarters) In May and June: Saturdays from 4 to 7 pm, and Sundays and holidays from 10 am to 12 noon and from 4 pm to 7 pm In July and August: every day from 7 pm to 10 pm Until 17 September, Saturdays from 4 pm to 7 pm and Sundays from 10 am to 12 pm and from 4 pm to 7 pm Mail: ufficio.turistico@comune.scarlino.gr.it</p>





	<p>Phone: SEDE SCARLINO +39 0566 38555/552</p> <p>PRO LOCO</p> <p>Via IV novembre, 2</p> <p>Mail: prolocoscarlino.gr@libero.it</p> <p>Facebook page: https://www.facebook.com/profile.php?id=100057683828654&sk=about&locale=it_IT</p>
Notes	<p>For people with reduced mobility, it is recommended to visit the village with an electric drive or with the help of a companion. The roads can in fact be bumpy and not always easily accessible, as it is a medieval village.</p>

TESTED BY: [Handy Superabile Social Promotion Association](#) in 2025

Please note: The following information refers to the date of verification shown at the bottom of each sheet. The Association is not responsible for any significant changes made by the property after the visit.





Table of Contents

General information	7
Description.....	10
How to reach Scarlino.....	10
Parking	14
Route from the car park to entrance	10
Description of the route.....	11
Events.....	33
Accessible public places	35
Medical offices/health facilities.....	39





Description



The toponym Scarlino has very ancient origins. The most accredited theory makes it derive from scabris, i.e. jagged, referring to a scabris portus, a Roman landing place near the current Puntone. In fact, it seems that the territory of Scarlino was already inhabited in prehistoric times: this is evidenced by finds near the Pisan Fortress, dating back to the Bronze Age. Other finds from the Hellenistic age (IV-II century BC) confirm the thesis that settlements already existed prior to the development of the early medieval village, while the discovery along the coast of the Puntone, of buildings and a port from the Roman era confirms the presence of commercial activities even before the Middle Ages. Dominion of the Aldobrandeschi counts until the twelfth century, except for a few parentheses in which it passed under other important families, the central nucleus of the village was purchased in 1227 by the Municipality of Pisa which substantially modified the fortress and completed the walls by uniting it within a single fortification. The Pisan dominion continued until 1399, when Scarlino passed to the Appiani until 1815, who





constituted the small State of Piombino. Before entering the Grand Duchy of Tuscany, there were numerous attempts to appropriate it by the Medici and Siena, which were never successful. Scarlino was very active in the period of the Risorgimento uprisings, in the village through the monuments and we remember Garibaldi's stay at the residence of Angiolo Guelfi with the consequent escape from Cala Martina to Portovenere. There are numerous attractions to admire in the village, the Church of San Martino, the Town Hall, the Palazzo del Conte, the Porta Senese and Piazza Garibaldi. About 4 km from the village it is possible to visit a wonderful castle (Rocca Pisana). The path leading to the castle is also connected to the village through numerous steps and steep climbs. For this reason, we recommend that guests with reduced mobility reach the Rocca directly by their own vehicle along Via della Panoramica.

How to reach Scarlino

<p>By car</p>	<p>From the North take the Genoa-Livorno motorway, exit at Rosignano Marittimo, continue on the Livorno-Grosseto highway towards Grosseto and exit at Scarlino; from here follow the signs for the village.</p> <p>From the South take the Rome-Civitavecchia motorway, continue towards Livorno on the Grosseto - Livorno highway and exit at Scarlino. From here, follow the signs for the village.</p>
----------------------	---





By plane	<p>The nearest airport to reach Scarlino:</p> <ul style="list-style-type: none"> • Pisa "Galileo Galilei" Airport, located about 130 km from Scarlino.
Assistance service for people with disabilities	Yes
Embarkation/disembarkation of passengers with reduced mobility	With courtesy chair and ambulift/finger
Tactile paths for the blind and visually impaired	Yes
There is a toilet room accessible with grab handles	Yes
By train	
Nearest station	The local railway station for Scarlino is Follonica.
Assistance service for people with disabilities	<p>The Follonica station is enabled for the assistance service for people with disabilities and reduced mobility (PRM), while the Talamone station is not enabled.</p> <p>To use the service, it is necessary to contact the Italian Railway Network through the relevant Blue Room, at the following addresses:</p> <ol style="list-style-type: none"> 1. toll-free number: 800 90 60 60 (from a landline)





	<p>2. National number: 02 32 32 32 (from a landline or mobile)</p> <p>The service provides information on the nearest enabled station and allows assistance to be booked.</p>
Blue Hall Reference	Firenze
There is a toilet room in the station accessible with grab handles	Si
By public and private transport	
Nearest bus stop	<p>The public transport service is operated by Autolinee Toscane, which offers connections from Grosseto to Scarlino.</p> <p>The bus station in Follonica is located in front of the Piazzale della Stazione.</p> <p>Per ulteriori dettagli, consultare il sito web (www.at-bus.it)</p>
Presence of adapted buses with ramp	<p>it is advisable to check the availability of the service in advance by contacting Autolinee Toscane.</p> <p>Contact details: toll-free number: +39 800142424 or +39 05551351</p>





Parking

Public parking nearby	YES, along Via della Repubblica. Other parking lots are located at the entrance to Via Roma and on the right side, inside the square that is located before reaching Via Roma.
Type of public parking floor	Asphalt
Presence of parking space reserved for people with disabilities	Yes, 1 stall on the left along Via Roma a few meters from the beginning of the itinerary. 2 stalls in front of the Church of San Donato.
Eventual notes	Request for access to the ZTL: The service is aimed at people with walking inability, with significantly reduced capacity or blind people who wish to circulate in limited traffic areas and park in reserved parking lots. The application can be sent by filling out the form at the following link: https://sportellotelematico.comune.scarlino.gr.it/procedure%3As_italia%3Aveicoli.disa



Progetto promosso da



Regione Toscana

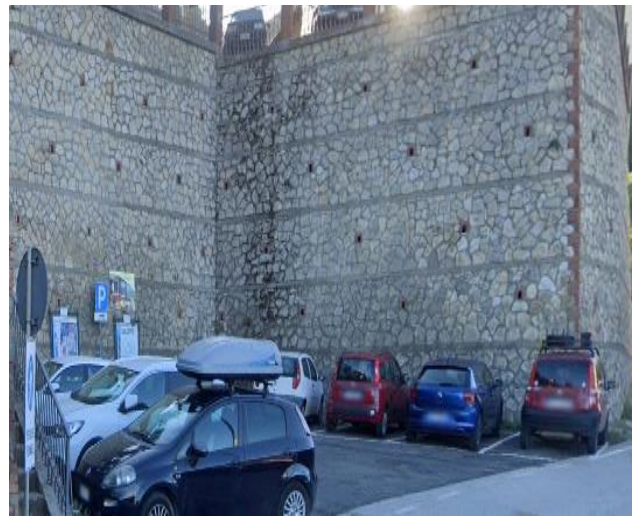
[bili%3Bcircolazione.sosta%3Btemporaneo%3Brilascio%3Bdomanda](#)

or by calling the Scarlino police command.

Tel +39 0566 38545



1 Public parking via XXIV Maggio



2 Public parking via XXIV Maggio

Progetto realizzato con il contributo della



Presidenza del
Consiglio dei Ministri
Ministro per la disabilità



3 Reserved parking Via XXIV Maggio



4 Public parking Via XXIV Maggio

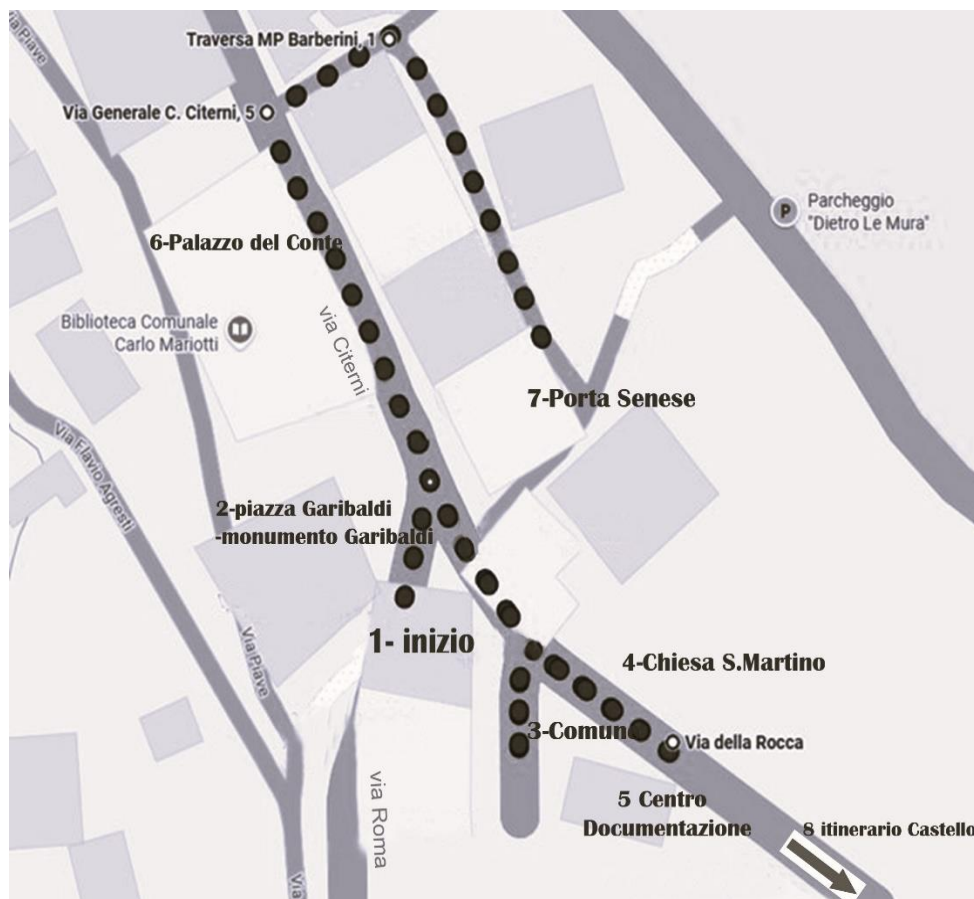
Pathway from the car park to the entrance

Pathway from the car park to the starting point	Obstacle-free
Distance from parking to entrance	Variable from 500 to 50 meters
Type of trail surface	Its asphalt
There are indicators and tactile maps	No





Description of the itinerary



Length	About 300 meters
Along the itinerary there are maps and tactile signs for the blind	No





The itinerary starts from the final stretch of Via Roma which allows the entrance to Piazza Garibaldi where the monument of the same name is located right in the center. At the end of 1849, Garibaldi, hunted by the armies of the Papal States, was helped by Scarlinesi, including Angelo Guelfi who helped him by entrusting him to General Olivo Pina, his right-hand man.

He was escorted to the rocks of Cala Martina where a fishing boat would be waiting for him to take him to safety in Liguria. This event is commemorated by the statue placed in the historic center and out of the workshop of the Pasquali brothers, expert craftsmen from Scarlino. The sculpture does not tell of a military Garibaldi but of a proud Garibaldi. Behind the statue is the side façade of the Count's Palace, with the side wall covered in stone. From the square we continue in the direction of Via della Rocca but immediately on the left side, next to the Old Inn there is an alley with 14 irregular steps, where we can see the Porta Senese which we will visit better through an alternative route. From the square you head towards Via della Rocca, through a ramp on stone block paving.

Accessibility:

The route from Via Roma to Piazza Garibaldi is flat and free of obstacles. The stone block flooring ensures regular mobility for wheelchair users.

From the square begins a path towards Via della Rocca, through a 10-meter ramp with a slope of 15% and paving in fairly regular stone blocks.



Progetto promosso da



Regione Toscana



5 final stretch of Via Roma



6 Entrance Piazza Garibaldi



7 Piazza Garibaldi



8 Garibaldi Monument

Progetto realizzato con il contributo della



Presidenza del
Consiglio dei Ministri
Ministro per la disabilità



9 Alley with steps



10 Entrance Via della Rocca

On the right we find the Palazzo Comunale, seat of the town hall and already mentioned in a deed of sale of 1276 by Ranieri di Tinacci to the Municipality of Pisa. In the seventeenth it was renovated, a civic tower with clock and bell was added, then demolished in 1950. Restored in the 80s, on the façade are visible the coats of arms of the Municipality of Scarlino, that of the Appiani and a plaque in memory of General Carlo Citerni.

Recently the building has been restored to be adapted to the town hall.

The structure, entirely exposed, shows the original wall texture of various pieces and brick, between the two portals the coat of arms of the Municipality consisting of an eight-pointed star and a commemorative plaque.

On the left of Via della Rocca we find the Church of San Martino. The church, already attested from the thirteenth century, was entirely rebuilt in 1759 at the behest of Princess Eleonora Appiani. It has the typical gabled façade and façade in sandstone mixed with brick. Inside, the church has a single nave.





Accessibility:

The Town Hall has 2 asymmetrical entrance portals, with two leaves, with a net span of 90 cm. Both doors have a step with a height of 10 cm.

The municipal building, developing on three levels, has an elevator located in the wall to the side of the 2 main entrance doors.

The elevator is accessible for people with motor disabilities. It has the following features:
door width 105 cm, approx.

internal width 120 cm, approx.

Depth 135 cm

Call button height 120 cm

The elevator reaches floor 1 where the offices open to the public are located

Church of San Martino with lowered arch entrance door in brick, with two leaves and a net opening of 120 cm. The door has an external step of varying height from 9 to 20 cm and an internal step of 9 cm. Passing through the second internal entrance door, there is a further step of 15 cm.



Progetto promosso da



Regione Toscana



11 Town Hall



52 Entrance to the Town Hall



13 Town Hall, original wall texture

Progetto realizzato con il contributo della



**Presidenza del
Consiglio dei Ministri**
Ministro per la disabilità

Progetto promosso da



Regione Toscana



14 Elevator



15 Entrance to the Church of San Martino



16 Church interior



17 Single nave Church of San Martino

Progetto realizzato con il contributo della



Presidenza del
Consiglio dei Ministri
Ministro per la disabilità



Originally the church was probably an oratory of modest size, perhaps even located in a slightly different position from the current one.

The figurative furnishings of the church are scarce, although on the left wall we find two noteworthy works.

On the altar on the left wall, inserted in a wooden frame, we find the Madonna and Child with Angels, dating back to the nineteenth century. Also located on the left side, we find a detached fresco, with St. Michael the Archangel, St. Andrew the Apostle and the Madonna and Child in glory, dating back to the sixteenth century.

At the end of the visit to the religious building, a singular plaque faces the church. The plaque commemorates Giuseppe Mazzini, a Republican and secular thinker.

The plaque was walled up by the Scarlino democracy on March 22, 1890.

After passing the Church of San Martino, continuing we find the Riccardo Francovich Documentation Center on the right side. The Museum is not accessible to people with motor disabilities due to the presence of steps. In addition, from the Church to the Museum there is a significant ramp.

At the Documentation Center there are archaeological materials that illustrate the various phases of life in the area of the Rocca di Scarlino from the Bronze Age to the seventeenth century. Among the finds of the Rocca is the treasure of Scarlino, consisting of 100 gold coins dating back to around the fourteenth century, found on the wall of the rectory of the Rocca, inside a jar.

Timetable

The museum is open from April to June on Saturdays and Sundays from 10 am to 12 pm and from 3 pm to 6 pm. July and August every day from 10 to 12 and from 16 to 19.

For guided tours of the museum and always updated hours:

Info and reservations: +39 0566/38552 Email: musei@comune.scarlino.gr.it





Accessibility

The Museum is not accessible to people with motor disabilities. due to the presence of internal steps and a step outside the main entrance door, with a height varying from 3 cm to about 28 cm.

From the Church to the Museum there is a ramp of about 15 meters with a maximum slope of 30%



18 Altar with wooden frame of Madonna and Child with angels



19 Plaque in memory of Giuseppe Mazzini



Progetto promosso da



Regione Toscana



20 Via della Rocca



21 Entrance to the Riccardo Francovich Territorial Documentation Center



22 Museum interior



23 Museum Room

Progetto realizzato con il contributo della



**Presidenza del
Consiglio dei Ministri**
Ministro per la disabilità



From the museum, go back to Piazza Garibaldi and proceed forward in Via Citerni.

On the left we find the Palazzo del Conte, of the Middle Ages. The building owes its name to the fact that it belonged to Ildebrandino XI Aldobrandeschi, known as the Red Count. It was the count himself who sold the complex to the Municipality of Pisa in the thirteenth century. Shortly thereafter the territory passed to the Pisans and in 1399 to the Appiani, Lords of Piombino, who occasionally occupied it with side branches of the family.

Numerous restoration works took place between 1985 and 1995 and brought the building back to its former glory.

The Palazzo del Conte, today looks like an imposing building with a rectangular plan, which is spread over four continuous levels. The external walls are covered in stone, while the main façade along Via Citerni is mainly covered in plaster. Today the building is home to Monte dei Paschi di Siena

After a few meters to the right of the Palazzo del Conte, there is the Traversa Maestro Barberini which has a cast iron column in the center.

Enter the side street and after about 20 meters, turn right, into Vicolo Dante.

Walk along the entire alley to the end. The alley has an obstacle-free stone block pavement.

From here, without going down the steep and bumpy ramp, you can admire the Porta Senese, also known as Porta delle Fonti, up close.

In ancient times, the Sienese gate was located along the wall circuit.

A plaque is affixed to the walls with the following sentence: "He presents himself with all his entourage at this door in contempt of fiscal arrogance. And those of Scharlino firmly heedless of the danger of the gesture did not want to let him inside"

On the plaque there is reference to the year 1379, in reality this date is a mistake of those who wrote on the marble, because the exact date dates back to 1369 when Charles IV of Bohemia Emperor of the Holy Roman Empire wanted to stop in Scarlino, but the people of



Progetto promosso da



Regione Toscana

Scarlino harassed by taxes did not want to grant hospitality to the most powerful man in medieval Europe. In doing so, lining up in front of the access door, they prevented the Emperor from entering the village.

Accessibility:

The width of the entrance passage from the wall to the column of the Traversa Maestro Barberini is more than 90 cm.



24 Piazza Garibaldi, Palazzo del Conte



25 Entrance to Palazzo del Conte

Progetto realizzato con il contributo della



Presidenza del
Consiglio dei Ministri
Ministro per la disabilità

Progetto promosso da



Regione Toscana



26 Entrance Traversa Maestro Barberini



27 Traversa Maestro Barberini



28 Vicolo Dante



29 Porta Senese

Progetto realizzato con il contributo della



Presidenza del
Consiglio dei Ministri
Ministro per la disabilità



Additional information

Another historical attraction of the village is the Rocca Pisana, which can be reached through two routes.

ROUTE 1

From the Scarlino Documentation Center located in Via della Rocca, it is possible to reach the Castle via 4 flights of stairs. The route is not accessible for people with motor disabilities with no precautions

ROUTE 2

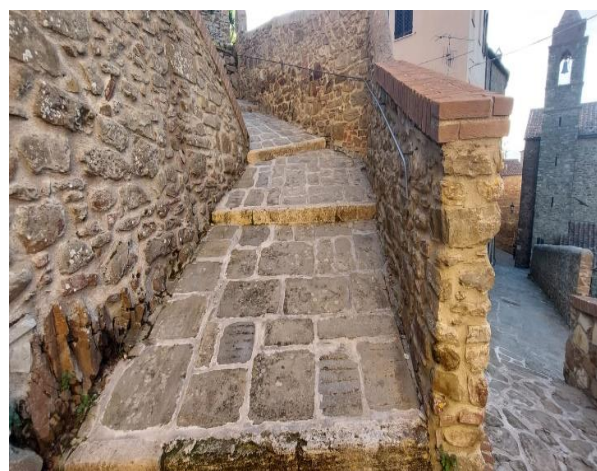
The route at point 1 can be overcome with an alternative route that still allows you to reach the Rocca from the historic center, only 5 km away and reachable by car. From Scarlino historic center to the Rocca, the route by car is well signposted.

Accessibility

At the Rocca Pisana there is 1 parking space reserved for people with disabilities



30 First flight of stairs



31 Second flight of stairs



Progetto promosso da



Regione Toscana



6 Third flight of stairs



33 Fourth flight of stairs



34 Entrance square to the Castle



35 Reserved parking space

Progetto realizzato con il contributo della



**Presidenza del
Consiglio dei Ministri**
Ministro per la disabilità



From the parking lot to the Rocca Pisana there are two entrances:

1. one on the right side that runs along the walls of the castle until you reach a small terrace to admire the internal panorama.
2. The other on the left side where along a stretch of road uphill you arrive at the entrance-back of the castle.

Route 1

Follow the right side of the path, where a beautiful circular tower overlooks from where you can admire the walls. The entire complex, entirely covered in stone, rests on much older structures that testify to the early medieval origin. The Rocca is in the form of imposing ruins recovered thanks to the restoration work carried out in the last two decades of the twentieth century.

Continuing further ahead we find a second section in stone blocks. The current complex, dating back to the late medieval renovation, consists of three corner towers different from each other and joined by a series of curtain walls of different heights. The north-eastern tower has a circular section.

The castle was built as a fortress during the tenth century, at the behest of the Aldobrandeschi, in an area that has given birth to finds from the prehistoric era.

We continue on the path that gradually narrows until we find a curve with a ramp that directs us to a panoramic terrace, from where we can admire the woods and the main villages of the hinterland of the Maremma northern area. The view is really wide and suggestive and also includes the surrounding countryside.





After the terrace on the left there is a cistern with a plaque granted by the ANPI to the people of Scarlino on June 22, 2010 which reads "September 1943, in this cistern some young people from Scarlino, heedless of the curfew, gathered at night to propitiate the outcome of the local resistance.

From the cistern the itinerary continues straight on through a path that directs us towards an area circumscribed by a fence, this is the archaeological excavation that has brought to light two apses leaning against each other dating back to the twelfth and tenth centuries. In this area, in the last excavation campaign, a glazed terracotta jar containing 100 gold florins minted by 7 mints, one of which is foreign, was found, now exhibited at the Documentation Center of the Territory located in Via Roma in Scarlino (not accessible to people with reduced mobility)

However, the pavement is irregular and very uneven and therefore we recommend going back to the starting point and continuing the visit from the left side of the castle.

Accessibility

Route 1

From the car park, take the right route where the circular tower overlooks. From here we walk about 20 meters with asphalt pavement and a slope of about 2.5%.

Continuing ahead we find a second section in fairly regular stone blocks. From the asphalt pavement to the block pavement we find a column in the center. The entrance gate is more than 90 cm. The stretch is flat.

The path gradually narrows from a width of more than 120 cm, to a width of 105 cm until the beginning of the curve.





From the bend another path begins with a ramp that reaches a panoramic terrace at the back. The section has a length of 15 meters, width 105 cm and a slope of 6%. The entrance gap between the ramp and the small terrace has a width of more than 90 cm. From the cistern, the itinerary continues straight ahead along a path with a width of more than 90. From here you can see an area circumscribed by a fence, this is the archaeological excavation.

However, the pavement is irregular and very uneven and therefore we recommend going back to the starting point and continuing the visit from the left side of the castle

Route 2

It can also be traveled by car.

From the parking lot, continue to visit the complex through the left side where you can admire the two square and rectangular towers.

The complex remained the property of the Aldobrandeschi family until the end of the thirteenth century, except for a brief and temporary passage to the Alberti family of Mangona. Sold to the Pisans between the end of the thirteenth century and the beginning of the sixteenth century, for about a century it was completely renovated. In 1398 both Scarlino and its fortress became part of the Principality of Piombino until 1815 and then became definitively part of the Grand Duchy of Tuscany. After a long period of degradation, important restoration works were carried out in the twentieth century.

You take an asphalt road that is initially flat and ends with a nice ramp until you reach a small square at the back of the castle where the entrance is also located.





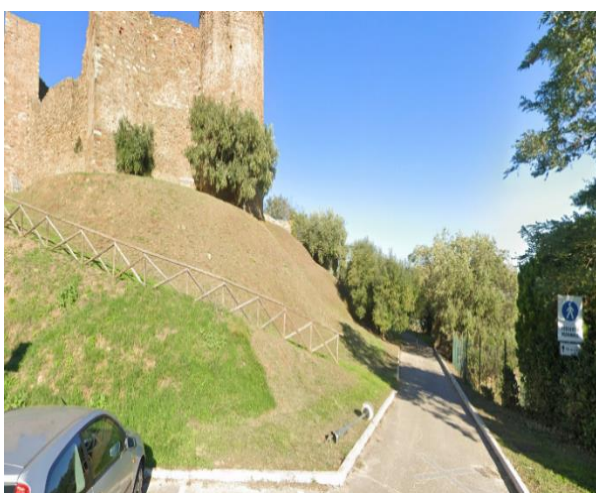
The Rocca can be visited by booking at the documentation center of the territory. Once the museum operators have been notified, guests with reduced mobility can also drive to the entrance.

Today the interior of the fortress is bare, but it has long been recovered by the Municipal Administration of Scarlino and used for the organization of musical events and theatrical events.

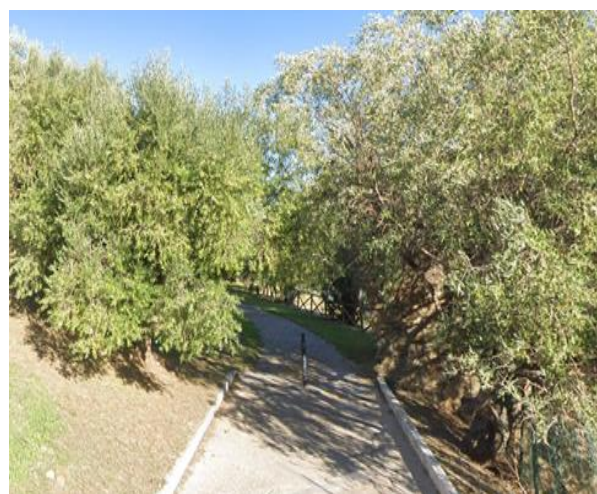
Accessibility

Route 2

From the square - parking lot, continue to visit the complex through the left side and along a flat paved road. After about twenty meters there is a ramp 26 meters long with a maximum slope of 10% until you reach the large square at the back.



36 Path to the right of the castle



37 First asphalt section



Progetto promosso da



Regione Toscana



38 Round tower



39 Stone block path



40 Ramp to reach the panoramic terrace



41 Panoramic terrace

Progetto realizzato con il contributo della



**Presidenza del
Consiglio dei Ministri**
Ministro per la disabilità

Progetto promosso da



Regione Toscana



42 entrance passage from the ramp to the terrace



43 grovestone



44 Path from the terrace to the excavation



45 uneven flooring

Progetto realizzato con il contributo della



Presidenza del
Consiglio dei Ministri
Ministro per la disabilità

Progetto promosso da



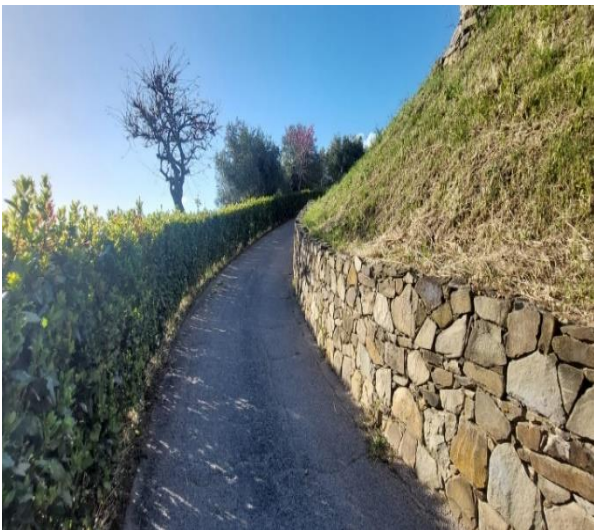
Regione Toscana



46 path entrance on the right



47 asphalt ramp



48 continuation of asphalt ramp



49 last section of the asphalt ramp

Progetto realizzato con il contributo della



**Presidenza del
Consiglio dei Ministri**
Ministro per la disabilità



50 Retro square of the Pisan Fortress

Eventi

The main events in Scarlino include historical re-enactments, important music festivals and summer cultural festivals, the most important are:

1. **Le Carriere del 19:** It is the highlight of the village, held every year close to **August 19th**. It celebrates the end of a cholera epidemic in 1855 with medieval challenges and games between the three historic districts (Centro, Rocca and San Donato), all crowned by costumed parades and theatrical performances.
2. **Grey Cat Jazz Festival:** Between **July and August**, the evocative scenery of the Rocca Pisana and the other squares of the municipality host a stage of this renowned jazz festival, which combines internationally renowned artists with excursions in nature.



Progetto promosso da



Regione Toscana



51 Le Carriere del 19



52 Historical parade



53 Locandina Grey Cat

Progetto realizzato con il contributo della



Presidenza del
Consiglio dei Ministri
Ministro per la disabilità



Accessible public places

In the village of Scarlino, in the locality of Puntone, about 8 km from the village, the following public place with accessibility characteristics has been surveyed:

1. **Da Vittorio Restaurant – accessible toilets**

See tabs with details below.

LOCAL	
Room type and name	Ristorante da Vittorio
Location	Lungomare G. Garibaldi – Puntone di Scarlino (GR)
Local access mode	via a ramp 350 cm long, 280 cm wide with a 3% slope; here there are 3 steps that can be overcome via a ramp, located on the left side, 7.50 meters long, 160 cm wide, with a slope of about 6%
Types of tables	4 legs
Space underneath for wheelchair approach	70 cm
The restaurant has an outdoor veranda	YES

Progetto realizzato con il contributo della





How to access	through a glass door with push opening (internal panic bar) and ramp 5 m long, useful width 120 cm and slope 4%.
TOILETS	
There is an accessible toilet	YES
Location	Near the lobby, Ristorante da Vittorio
Door type	Single-leaf, lever handle, fixed handle, external opening and 82 cm net opening
Toilet height	50 cm. Continuous type toilet
Free space on the sides	Right and front 80 cm On the left 20 cm
Presence of grab bar	YES
Flexible hand shower	NO
Washbasin height	75 cm
Type of mirror	Fixed to the wall and usable for guests with reduced disabilities



Progetto promosso da



Regione Toscana



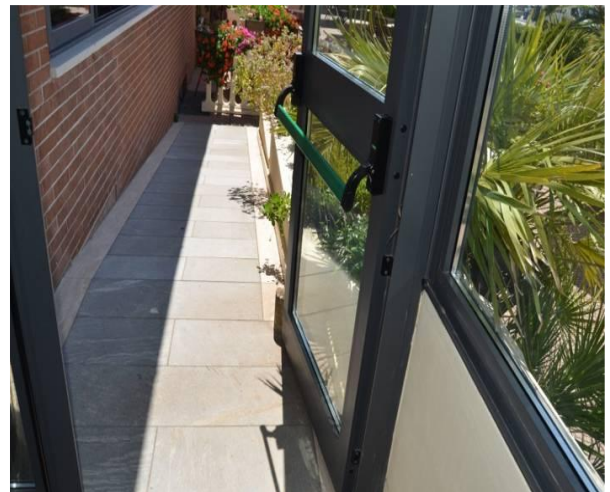
54 Restaurant entrance



55 Ramp



56 Indoor tables



57 Ramp to veranda

Progetto realizzato con il contributo della



**Presidenza del
Consiglio dei Ministri**
Ministro per la disabilità

Progetto promosso da



Regione Toscana



58 outdoor space



59 Toilet with grab bar



60 Washbasin and mirror

Progetto realizzato con il contributo della



Presidenza del
Consiglio dei Ministri
Ministro per la disabilità



Medical practices/healthcare facilities

Hospitals near the property	<p>Sant' Andrea Hospital Via Risorgimento 43 58024 Massa Marittima (GR) Tel. +39 0566 909111 – about 16 km away</p> <p>Misericordia Hospital Via Senese 161 58100 Grosseto Tel +39 0564 485111</p>
Dialysis facilities	<p>Dialysis service present. It is activated at the request of the interested party. For organisational reasons, information and requests should preferably be requested well in advance at the following addresses:</p> <p>Grosseto provincial area MISERICORDIA HOSPITAL IN GROSSETO</p> <p>Nephrology and Dialysis Unit Tel.+39 0564 485.218 from Monday to Friday, hours 09.00-12.00/15.00-19.00</p>





	<p>Papi Alberto - Hemodialysis Nursing Coordinator. Tel. +39 0564 485159 - alberto.papi@uslsudest.toscana.it</p> <p>Clinical Manager: Dr. Paolo Conti mobile +39 335 7207316 - paolo.conti@uslsudest.toscana.it</p> <p>Nursing Manager for Grosseto: Dr. Lorenzo Baragatti - lorenzo.baragatti@uslsudest.toscana.it</p>
Other healthcare facilities	<p>Scarlino Red Cross Via Roma 8 58020 Scarlino (GR) Tel +39 0566 37224 – about 25 km away</p>

TESTED BY: [Handy Superabile Social Promotion Association](#) in 2025

